

VILLA
G17

DHB



01

Connected *Living*

Flooded in natural light, expansive spaces connect land to sea. As day moves into night, watch as new spaces emerge to explore and enjoy. A continual and natural flow with the perfect indoor and outdoor living.

Created by NAGA Architects



Where earth *meets sky.*

*Mashrabiya panels cast
geometric shadows and
the sun begins to dip.*

Clean lines adorn the interior as you walk through the grand seven metre door and enter the heart of the villa. From earth to sky, high rising panels and beams at the entrance enhance the space, drawing the eye above, as views of rippling moving water up high create jumping shadows below. Sweeping through the villa, the movement of lights and shadows take the eye across to the unending lagoon and pool views.

Walking through the entrance, feel the harmonious balance between nature and design as open spaces surround you. The Japanese inspired Zen Garden and Koi pond provides the centre of tranquillity, as the water and trickling fountain can be heard when passing by or whilst relaxing in the courtyard. Unique to The Palm, the indoor courtyard offers reprieve – a space to enjoy a book, take a minute for yourself, or dine and entertain friends. Custom made art provides a pop of colour to the entrance and adds some vibrant contrast and offers views of the peaceful Zen Garden – an ideal room to get away from stresses and strains of everyday life.

With views as far as the eye can see and light reflecting off rippling water above and below, ascend the floating staircase to reach higher floors.





Surrounded by natural light and the beauty of nature indoors, the area around the Koi pond inspires tranquility and relaxation.





Located on the most popular frond on Palm Jumeirah, G17 is an innovative architectural wonder.



Where indoors *meets outdoors.*

Exquisite Italian travertine envelops the exterior of the villa and continues within, as beautiful sandy colours reflect the natural surrounds.

Oceanfront luxury. The ideal space to entertain friends and family, or step onto your own piece of private beach.





Holistic *architecture.*

Casting shadows as the light changes, nothing disrupts your line of sight all around. From the exterior facade to the walls indoor, consistency is felt and the natural environment reflected. Lounge on the custom-made sofa, swim or relax on the underwater chaise lounge of the infinity pool, or sit al fresco in the sunken sitting area. A hidden TV emerges from below to surprise guests for ultimate entertainment and enjoyment.

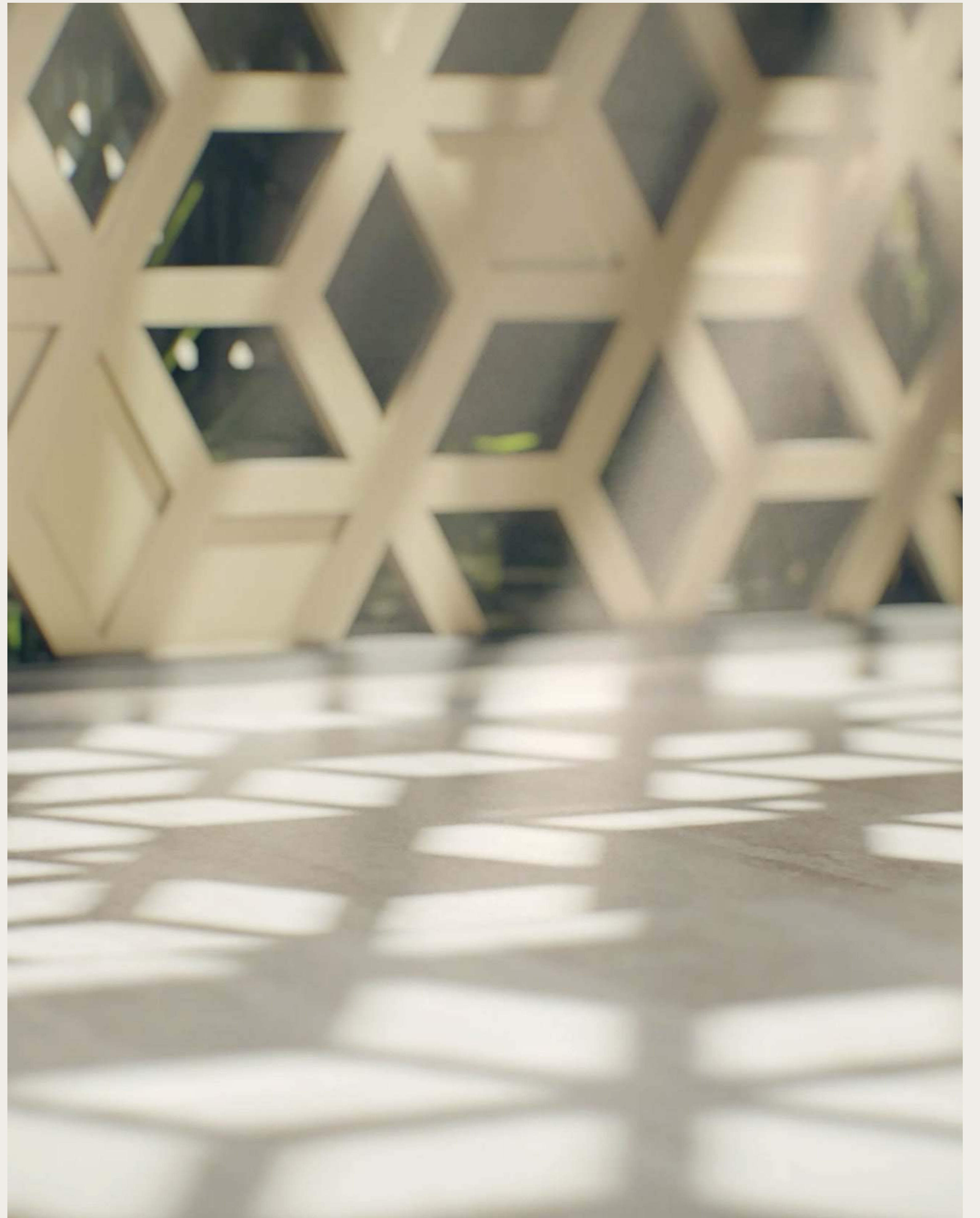
Cool tones set the scene for the ultimate day-tonight setting.



A photograph of a bedroom interior. On the right, a bed is visible with white linens and a dark headboard. To the left of the bed is a white nightstand holding a bouquet of white flowers and a small dark box. The wall behind the nightstand is covered in large, light-colored, textured tiles. A window with a textured blind is on the far left. The scene is lit with soft, natural light, creating a calm atmosphere.

Bask in light.

Mashrabiya –
living shadows.





History –

A type of window with latticework originally used to allow air to flow through, cool buildings and protect them from the harsh sunlight was also used to provide privacy. The exact origin of the mashrabiya however is unknown. It is believed to have originated and been inspired by Arabic culture and been part of Arabic and Islamic architecture since the Middle Ages.

Historically made of wood, mashrabiya were mostly found in palaces or homes, and normally on higher floors, sometimes covering entire walls of buildings. The latticework would often differ depending on the region produced. Today, architects and designers still use this ancient form for these reasons, but have also created their own modern impressions – fusing the old with the new.

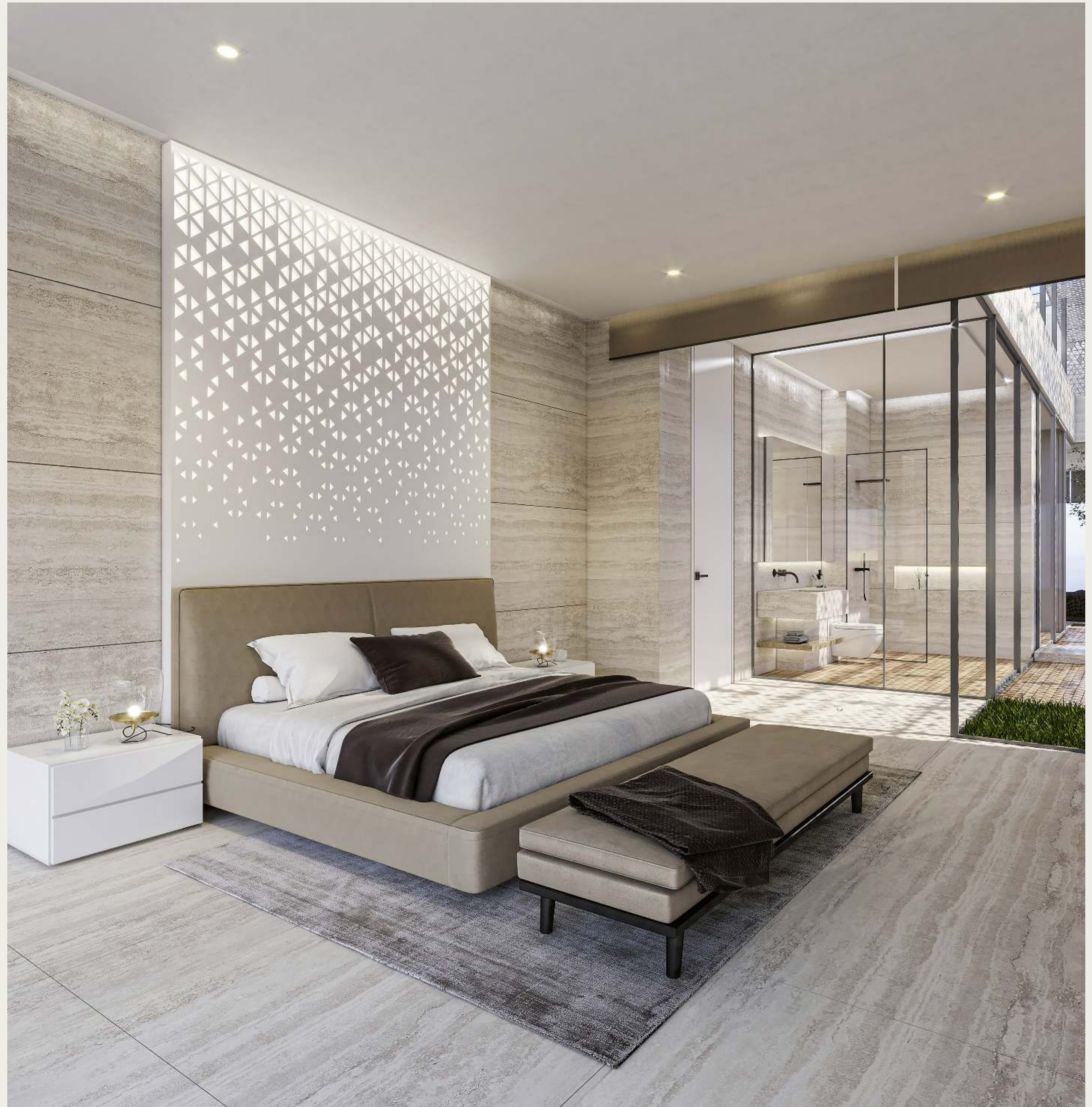
A seamless integration between nature and light, the primary bathroom is an ideal space to soak up your surroundings.



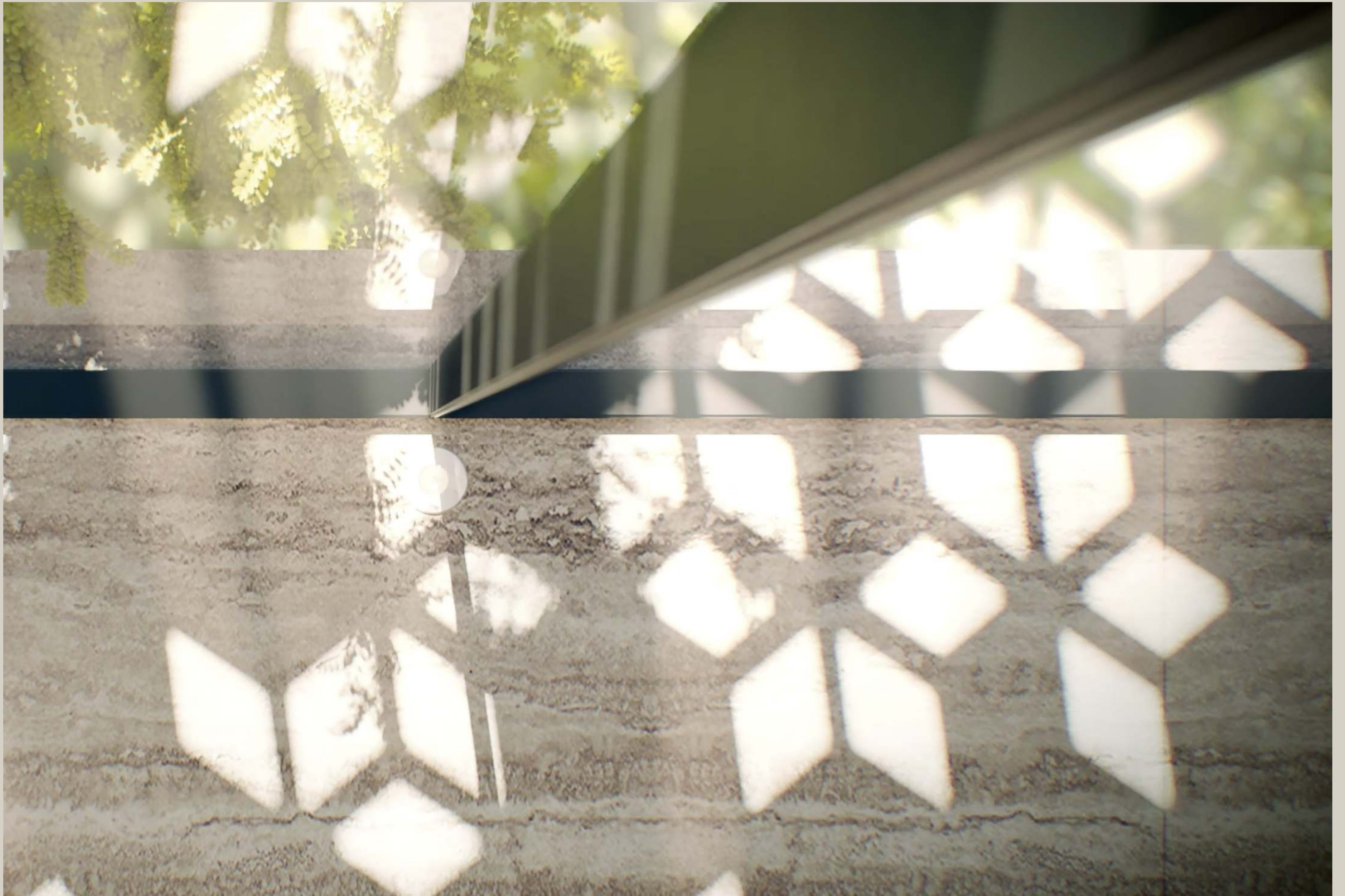
Custom wood and glass cast shadows along the walls and floors as modern-day Mashrabiya has been thoughtfully placed throughout the villa. A type of window with latticework originally used to allow a gentle breeze to cool spaces is now an architectural design showpiece.

This age-old traditional form creates new visuals and projections as the light shifts and shines through the parametric design. Whether over the indoor pocket garden, the bespoke backlit headboards in the bedrooms or across the expansive bathrooms, the evolving geometry is the only constant.

Used as highlight in one of the bedrooms. Connecting it to the rest of the house.







The transparent water feature above the glass sky bridge harmoniously blends with its surroundings and naturally draws the eye up above.

Skylight – *Ripple & flow.*

Walls and ceilings made of floor-to-ceiling glass create expansive spaces as the inside blurs with the outdoors.

Look above and all around and witness the flow and movement of water – from the sky bridge to the pond, from the pool to the ebb and flow of the tides from the ocean afar. The sounds of trickling water can be heard wherever you are, as four fountains are perfectly placed ensuring a feel of serenity.





Ever-changing *spaces and places.*

Rays of light pass through the glass and dance along the travertine walls and textures all around. Day moves into night and new areas are created to explore as spaces continuously change.

Cleverly thought out and purposefully designed, the cantilevered staircase with cable handrails allows for light and movement to pass through as you float above the ground.

*The Zen Garden and Koi pond
provide private sanctuaries or places
to entertain and enjoy.*

A photograph of a pond with several koi fish swimming in clear, blue water. In the upper left corner, there are several pink lotus flowers blooming among green lily pads. The water reflects the surrounding environment, including a large, dark green tree on the right side. The pond is bordered by a light-colored stone or concrete edge. The overall scene is peaceful and aesthetically pleasing.

Flowing water.

Nurture *and grow.*

An immediate connection with nature and all the four elements is present. As the sun seeps through the greenery, and the light changes, observe shifting shadows across your feet and your surrounds as textures begin to move and jump. From lush palms to bright bougainvillea carefully selected and locally sourced, sit outside in your own lush haven of perfectly manicured lawns and greenery.





*Uninterrupted views of the
beauty of nature all around.*





02

Curated *Spaces*

Every nook and cranny, pattern and texture, design and space has been carefully considered and thoughtfully approached. Everything has its place and purpose. Whether facing the rising sun or the direction of the Arabian winds, varied encounters are had, and sights are seen.



Views from above *and* from below.

The movement of light, and the casting of shadows through areas within and those outside enhance the experience of this perfectly designed home.

Take the lift or ascend the floating staircase and behold the luxury and splendour of the primary bedroom. L-shaped in design, this glass space can be separated by a sliding smart glass 'curtain' ensuring your privacy or left untouched allowing a true 360° view. The wrap-around travertine connects you with the outdoors and catches the light as the sun rises and falls.

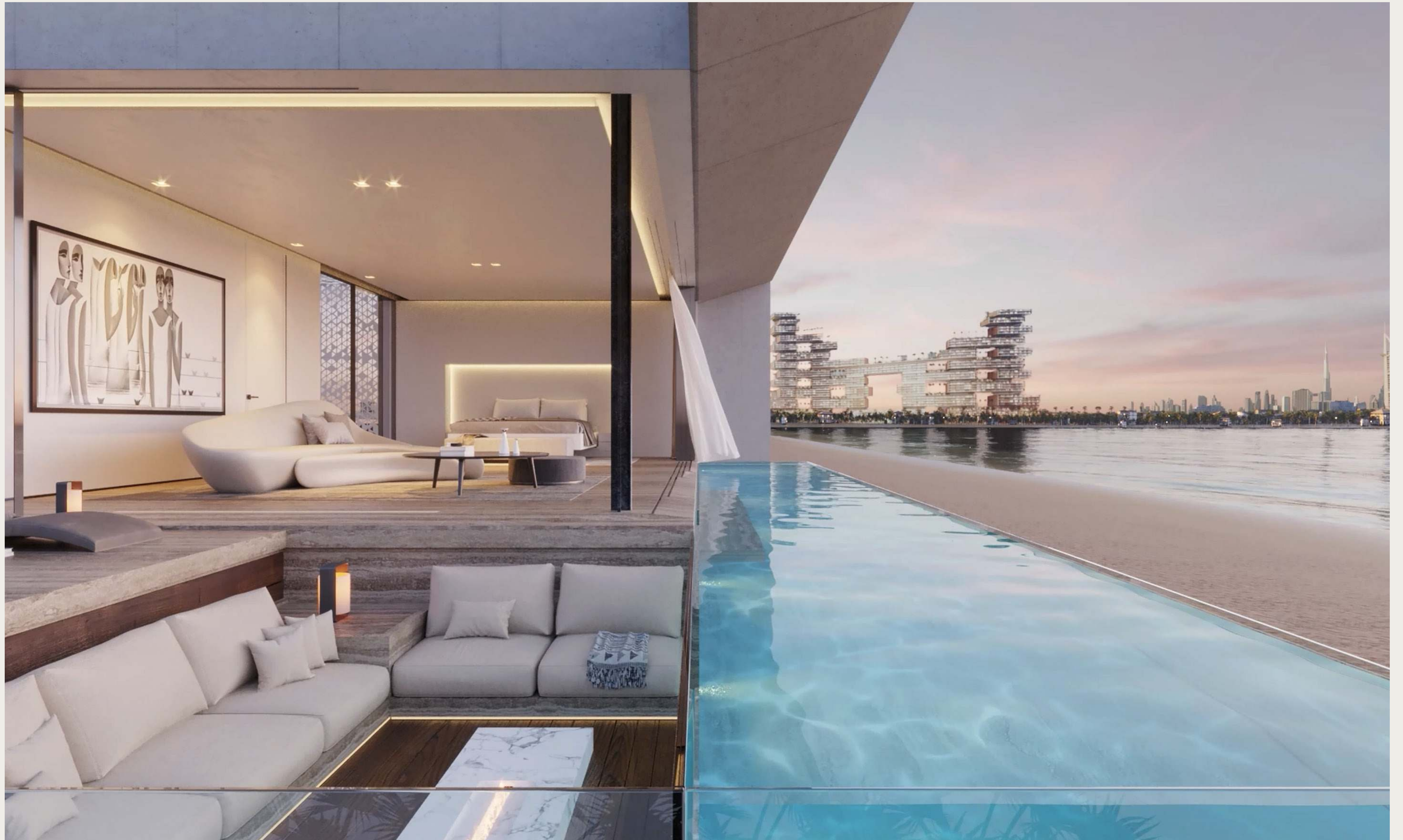
Curated art from around the globe bringing bursts of colour, varying textures and styles to your home.



The primary bedroom - an ideal place to rest and observe the open spaces around you.

Thoughtfully placed, a geometric Mashrabiya glass wall separates you from the expansive bathroom, and varying patterns and shapes move across both areas with the changing light. Always connected with nature, your very own pocket garden awaits, as you lounge in your freestanding bath and soak in your surroundings. A place to completely relax, whether sprawled on your bed, the exquisite Zaha Hadid chaise lounge or simply step into your own infinity edge lap pool and feel like you're floating between the ocean and sky.

Enjoy this exclusive hideaway with your loved one or even with friends, as a sunken seating area besides the pool is the perfect space to enjoy the sun begin to set over the city of Dubai. A cleverly positioned bar and a hidden TV can rotate and position as you desire for you to either entertain or take it all in yourself.



Views of the Dubai skyline await you as you unwind in your own private haven.



*Bedrooms bathed in natural light
with shadows dancing against the
walls and floors.*

Just below, on the first floor, four guest rooms are surrounded by natural vegetation from the pocket garden and flooded with natural light. Both sets of bedrooms are separated by the glass bridge and water feature which ensures moving shadows and light as the sun shifts throughout the day. Headboards made of travertine are backlit with either 3D panelling or Mashrabiya ensuring for beautifully crafted light in the room.

Glass is ever prominent with two bedrooms directly opening up to the lush pocket garden from their bathrooms' glass walls, however privacy is taken care of as an architectural mesh screen extends all the way up to the roof. The other two bedrooms offer idyllic views of The Palm and beach below with balconies to soak in the sun and take in the ocean air.

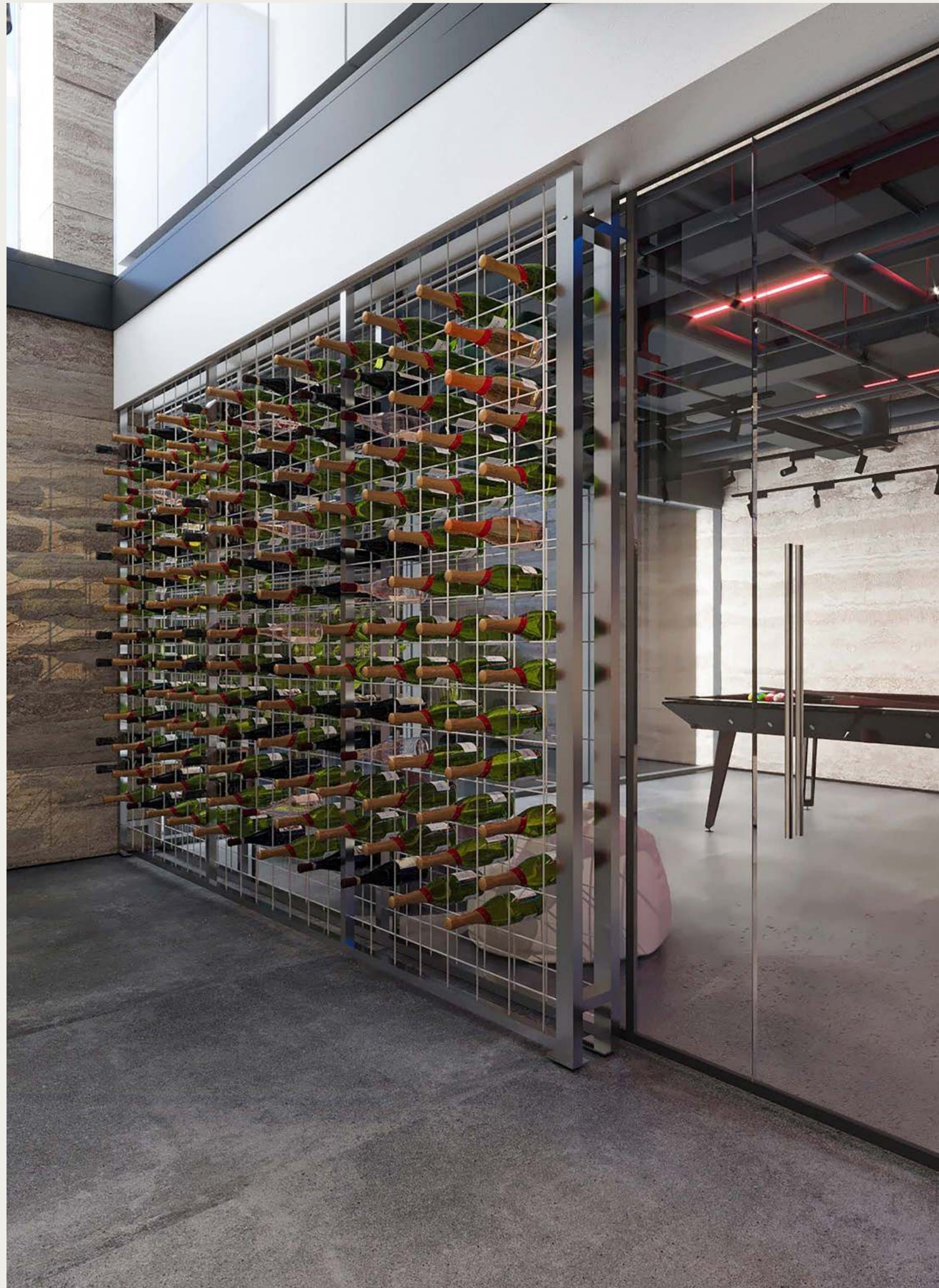


Beautifully crafted 3D travertine paneling mirrors the surrounds of this guest bedroom as both natural and cove lighting illuminate the room.





From the fitness centre, step outside and take refuge in one of the many intimate spaces shrouded in light.



A private cinema fitted out with leading technology is dimly lit for prime viewing and experience.

A complete home theatre system is found on the basement level which offers only the best in technology. Connected to an entertainment area with varying purposes and uses – a fully equipped and extensive gym, a modern pool table and beautifully crafted glass wine wall completes the expansive space. Even though below ground, the area is flooded in natural light and surrounded by greenery from the outdoors.





Light-filled *living.*

The main living area with show kitchen from bulthaup Germany is a dream for any host. The ten-seater Minotti table has endless views of the pool and ocean as well and the skyline of Dubai – from The Palm view to some of Dubai's icons. Basked in sunlight during the day or the flickering of light from the moody fireplace at night, this open living space brings the outdoors in as continuity of colours, form and textures are felt throughout. Your eye is drawn down through the glass floor, as light reflects on the colour-filled wine wall below complete with wines from the around the world.





The calacatta porcelain island in the show kitchen is ideal for open-plan living and dining. Glass flooring provides unrestricted views of the wine wall below.



The large Minotti dining table with white calacutta marble top perfectly blends with the kitchen and living area, and allows for open-air dining and entertaining.



Perfectly designed to merge inside living with out, this open space is immersed in nature and ensures an effortless flow throughout.



03

Location

Location

Step outside your private villa and observe some of the world's most beautiful wonders – from Atlantis, the Palm, the Burj al Arab to Ain Dubai, the views are endless.

Palm *Jumeirah.*

Along Dubai's "Billionaire Frond" on Palm Jumeirah, walk along the water's edge on your private beach, or enjoy some of The Palm's captivating experiences. Less than a few minutes away is the newly opened Nakheel Mall with over 140 shops, 30 restaurants and cinema. The Pointe offers a multitude of dining options and entertainment, including Dubai's largest fountain show. Walk along the Crescent and observe the sea life in the lapping waves or the mega yachts passing by. Discover the multitude of luxury hotels, unwind and get pampered at one of the spas, or enjoy some exhilarating watersports, all on your doorstep.



On your *doorstep.*



1. A trip to the observation deck on the 52nd floor of The View at The Palm Tower is a must for the ultimate 360° views of Palm Jumeirah, all of its fronds, the trunk, and the crescent
2. Visit Atlantis, The Palm and take a helicopter flip over the city of Dubai, enjoy the thrilling rides at Aquaventure Waterpark, swim with the dolphins, or visit the Lost Chambers aquarium
3. Watch Dubai's largest fountain show at The Pointe and take a stroll along the boardwalk
4. Visit one of The Palm's trendy Beach Clubs
5. Learn how to windsurf, kayak or use a stand-up paddle board and enjoy the sights around Palm Jumeirah
6. Enjoy a day of wellness and pampering at one of the many spas along The Palm
7. Visit the recently opened Nakheel Mall where you can enjoy shopping, dining, or taking in a movie
8. Dine at some of Dubai's trendiest outdoor restaurants at Palm West Beach
9. Enjoy a bicycle ride or take a long stroll along the 11km crescent
10. For the thrill-seeker, a visit to Skydive Dubai for breathtaking views from above



04

Seamless *design*

From the basement to the roof, every detail has been considered and thoughtfully designed. Cohesion has been achieved through colour scheme, materials used and architectural structure.



Ground Floor –

An entertainment haven soaked in natural light. Expansive spaces with areas offering reprieve and respite. Whether in your bedroom, within the Zen Garden, the open show kitchen and lounge, taking a dip in the infinity pool or sunken outdoor seating – the options are endless.

- | | |
|-------------------|--------------------|
| 1. Entry | 9. Maid's Room |
| 2. Powder Room | 10. Maid's Bath |
| 3. Guest Bedroom | 11. Closed Kitchen |
| 4. Guest Dressing | 12. Show Kitchen |
| 5. Guest Bath | 13. Dining Area |
| 6. Garage | 14. Living Area |
| 7. Driver's Room | 15. Lift |
| 8. Driver's Bath | 16. Stairs |

Area: 284m²



First Floor –

Sleeping and living for all the senses. Four bedrooms take centre stage with views of the beach, pocket and Zen Garden below shrouded in natural light from the glass all round.

- | | |
|--------------------|---------------------|
| 1. Bedroom 1 | 7. Bedroom 3 |
| 2. Bedroom 1 Bath | 8. Bedroom 3 Bath |
| 3. Bedroom 2 | 9. Bedroom 4 |
| 4. Bedroom 2 Dress | 10. Bedroom 4 Dress |
| 5. Bedroom 2 Bath | 11. Bedroom 4 Bath |
| 6. Retreat | |

Area: 229m²



Second Floor –

*An unrivalled primary bedroom.
A living space not only offering a place
to sleep, but one to relax and entertain.
Your very own infinity pool, bar and
sunken lounge with views of The Palm
and ocean afar.*

- | | |
|--------------------|-------------------|
| 1. Primary Bedroom | 1. Primary Bath |
| 2. Primary Dress | 2. Primary Toilet |

Area: 133m²



Basement Floor –

A place to play or relax. Watch your favourite movie in the theatre room or break a sweat at the fitness centre. This space is yours to enjoy. Play a game of pool, before choosing your favourite wine from the custom-made wine wall.

- | | |
|---------------------|------------|
| 1. Multipurpose/Gym | 4. MEP |
| 2. Powder Room | 5. Storage |
| 3. Home Theatre | |

Area: 133m²

Some of the finest brands from Europe, USA and further afield have been sourced to furnish and equip the villa. Hand selected by the team at NAGA Architects, no detail has been left out.

Fully automated, the villa can be controlled through your fingerprint, iPad or phone. From the lighting, curtains, smart glass, to facial recognition with Bluetooth, the technology used is of the best.

GROHE

KOHLER

TOTO

ELKAY

KASCH
WELLNESS

Whirlpool

TOSHIBA

DAEWOO

TurboTorch

FLEXALIGHTING
TOP QUALITY ITALIAN LED LIGHTING

SIEMENS

SONY

LG

SAMSUNG

BLU
lighting optimize

HÖRMANN

LOGIC

Miele

GEBERIT

LEDRAYS
MASTERING LIGHT

DAIKIN

Klipsch

KNAUF

smeg

basalte

linea
light
group

Poliform

GESSI

CRESTRON

FLOS
THE LIGHTING COMPANY

LEDS C4

OPaini

DENON

bulthaup



05

Meet the *Creators*

"Successful architecture cannot be achieved by any singular idea – it requires a harmonious interweaving of the metrics surrounding a design project."

–
*Dr Shams Naga, Founder and
Principal of NAGA Architects,
and lead architect of G17*



A project that took two years to conceive – G17 is a true architectural vision brought to life. With no constraints on design or interiors, Dr Shams Naga, Founder and Principal of NAGA Architects, had creative reign for this project. No detail left unturned, with every nuance overseen by Dr Naga, the villa is a true testament to what pure artistry this field of work consists of.

In partnership with DHB Holdings, this is one of many six-bedroom homes to be built as part of The Palm Dubai development. DHB, headquartered in Dubai, United Arab Emirates, also operates in Riyadh, Saudi Arabia and will soon be in Cairo, Egypt and Los Angeles, United States of America. Their focus is predominantly real estate and developing communities and contemporary homes, from modular affordable homes to exclusive private residences.





VILLA
G17

UAE: +971 4 332 4455
KSA: +966 11 463 0460

A property by



info@dhbholding.com